

GREEN COUNTY LAND AND WATER CONSERVATION

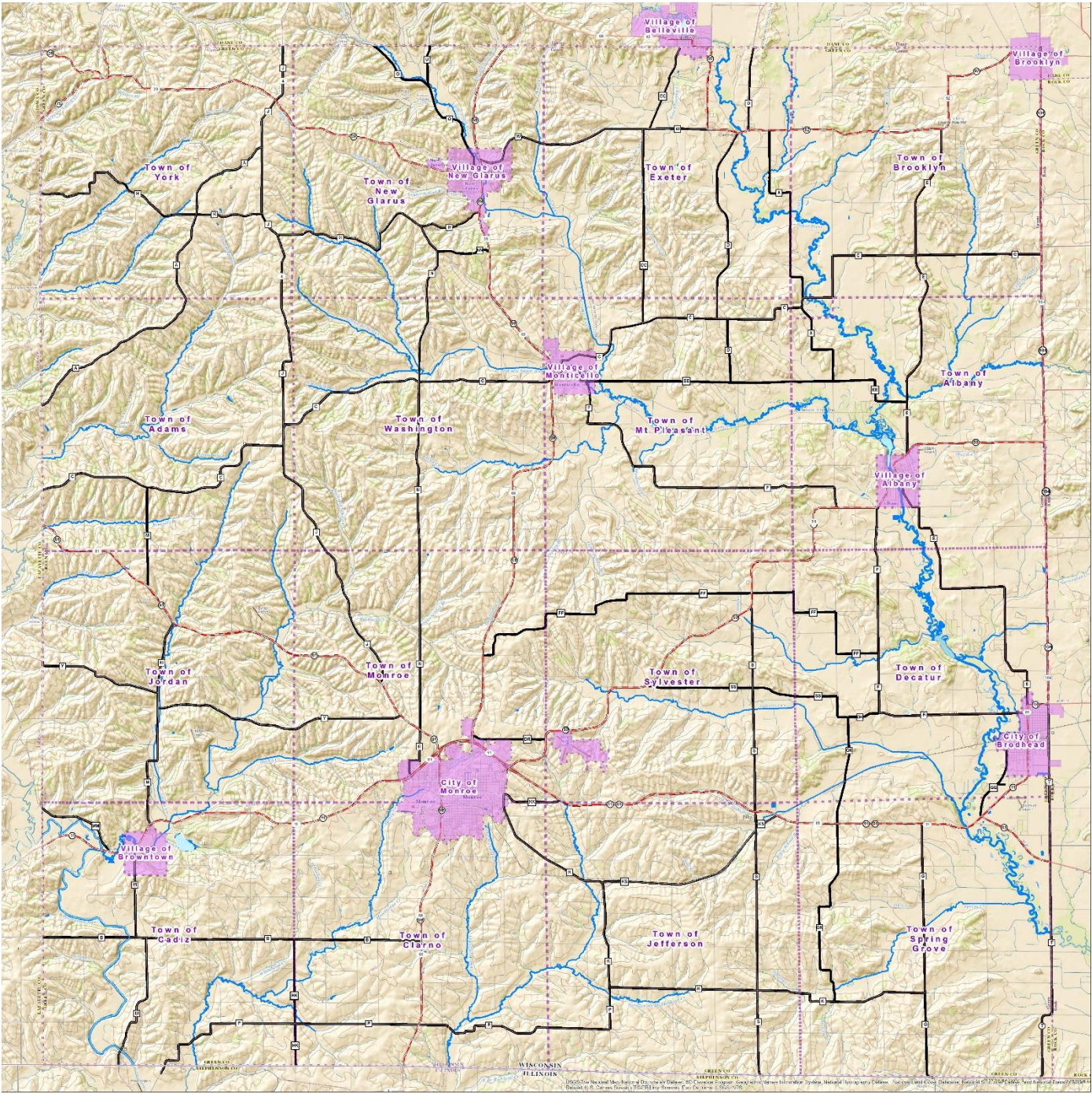
LIVESTOCK FACILITY STUDY GROUP

OCTOBER 12, 2017

Green County Land & Water Conservation Dept.

- Administer state cost-sharing for conservation practices
- Enforce local ordinances & state mandates
- Provide conservation planning
- Continue public education

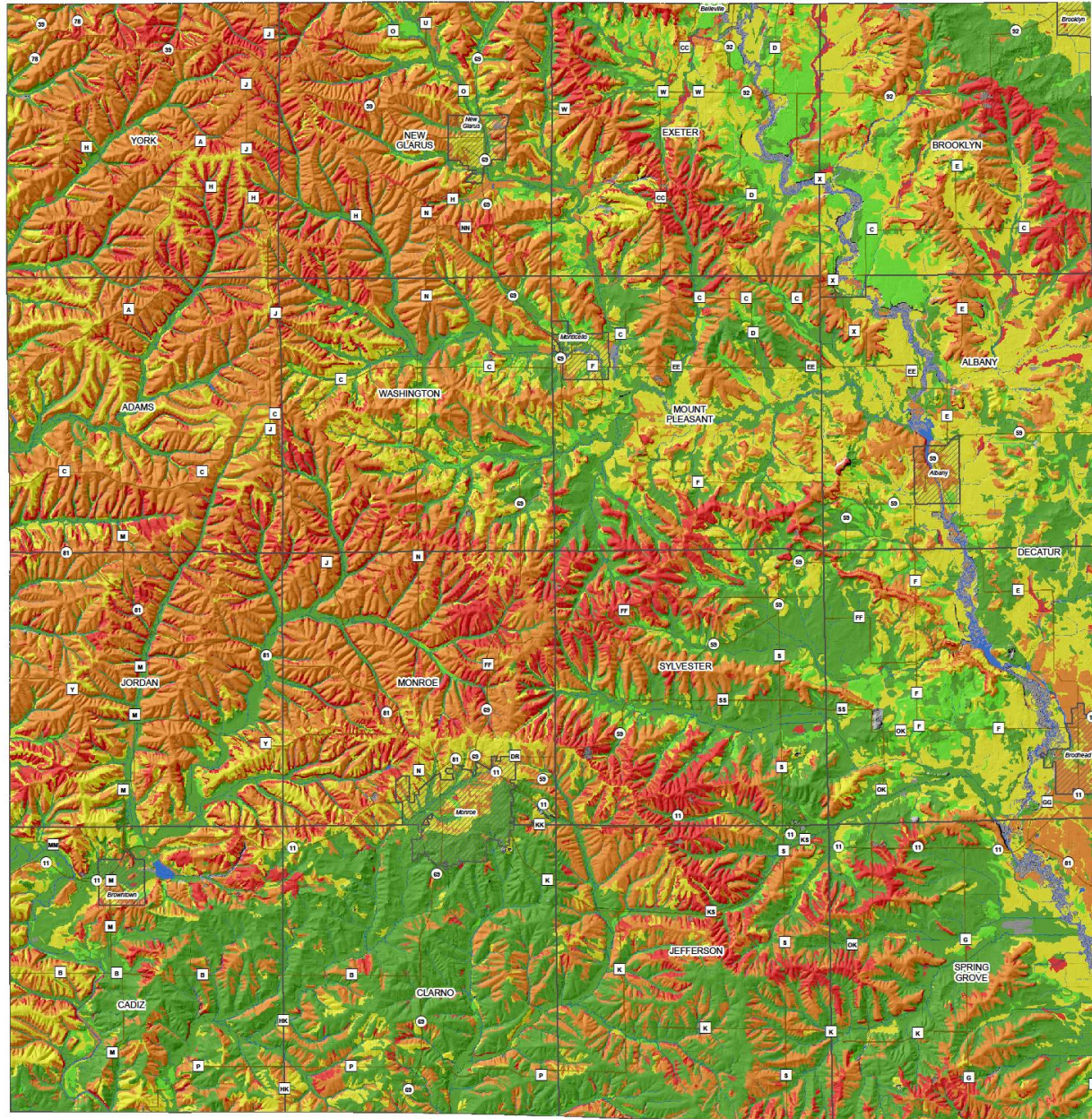
Our Mission: Help others to keep the soil on the fields, and the manure out of the streams and groundwater.



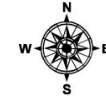
Our Methods: Education, technical assistance, and administering government programs that wisely encourage conservation.

"T" Factor for Soils

Green County, Wisconsin



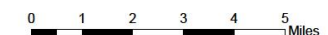
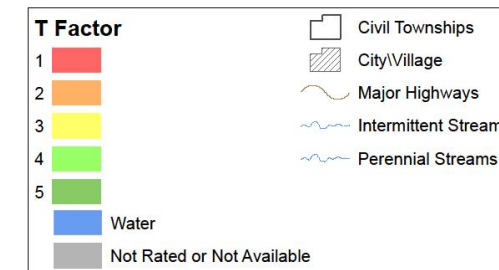
Green County



T is the soil loss tolerance factor. It is defined as the maximum amount of erosion at which the quality of a soil as a medium for plant growth can be maintained. Erosion losses are estimated by the Universal Soil Loss Equation and the Revised Universal Soil Loss Equation.

The T factor is assigned to soils without respect to land use or cover. The classes of T factor are 1, 2, 3, 4, and 5. The five classes range from 1 ton per acre per year for very shallow soils to 5 tons per acre per year for very deep soils that can more easily sustain productivity.

The reference for this information is: Natural Resources Conservation Service, National Soil Survey Handbook, title 430-VI (Washington, D.C., U.S. Government Printing Office, September 1999).



Wisconsin Transverse Mercator Projection
North American Datum 1983/91

1:75,000



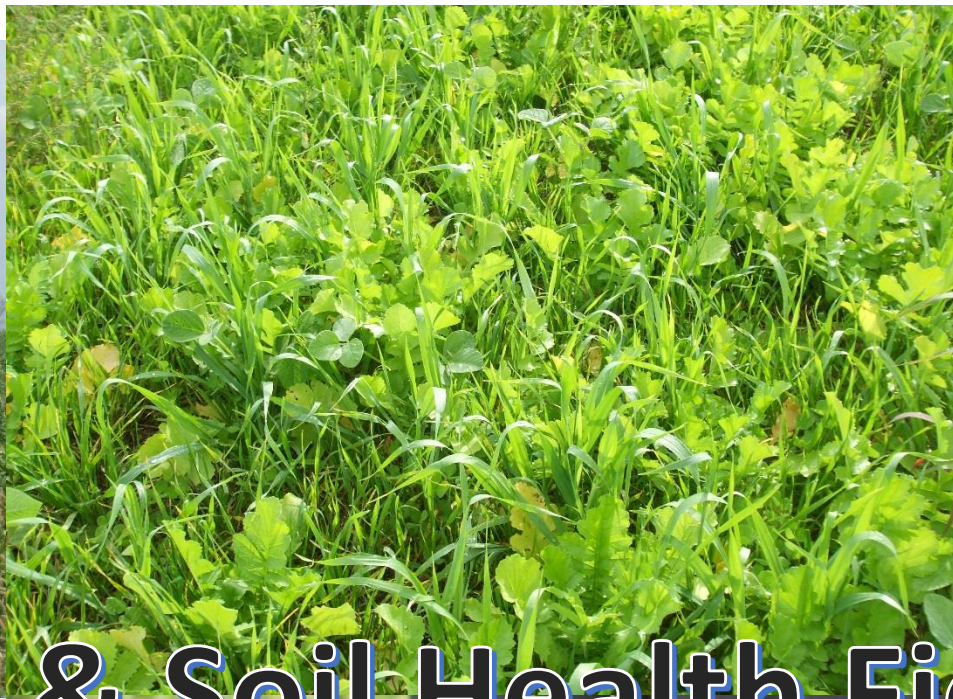
USDA is an equal opportunity employer and provider.

Sources:
USDA-NRCS SSURGO Soils
Green County LiDAR 3 Meter DEM
12/2/2013

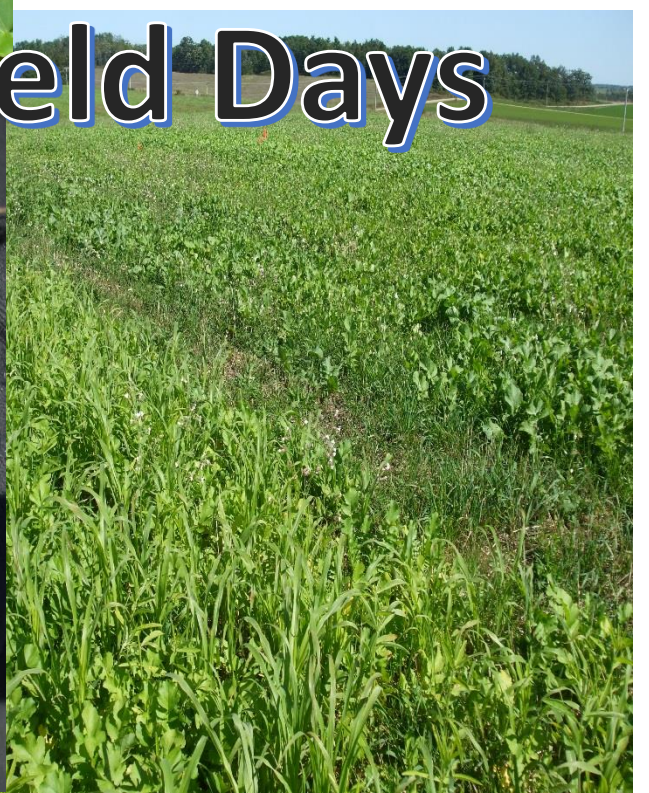


Youth Conservation Days





Cover Crop & Soil Health Field Days

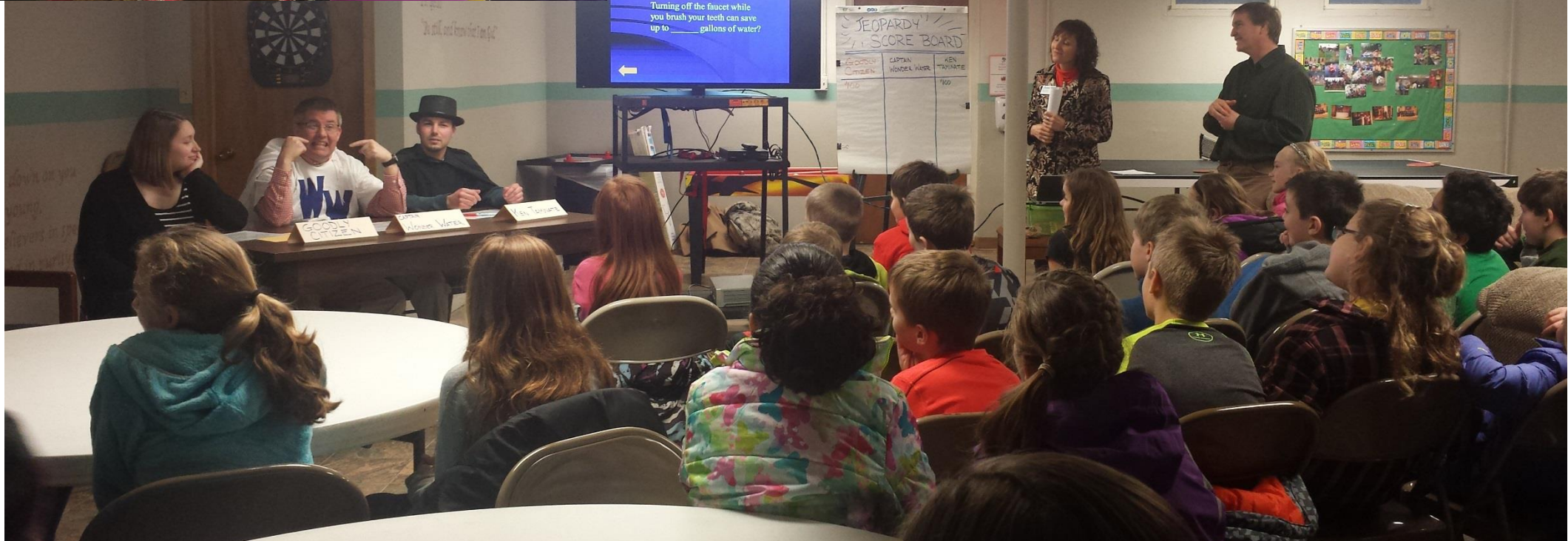
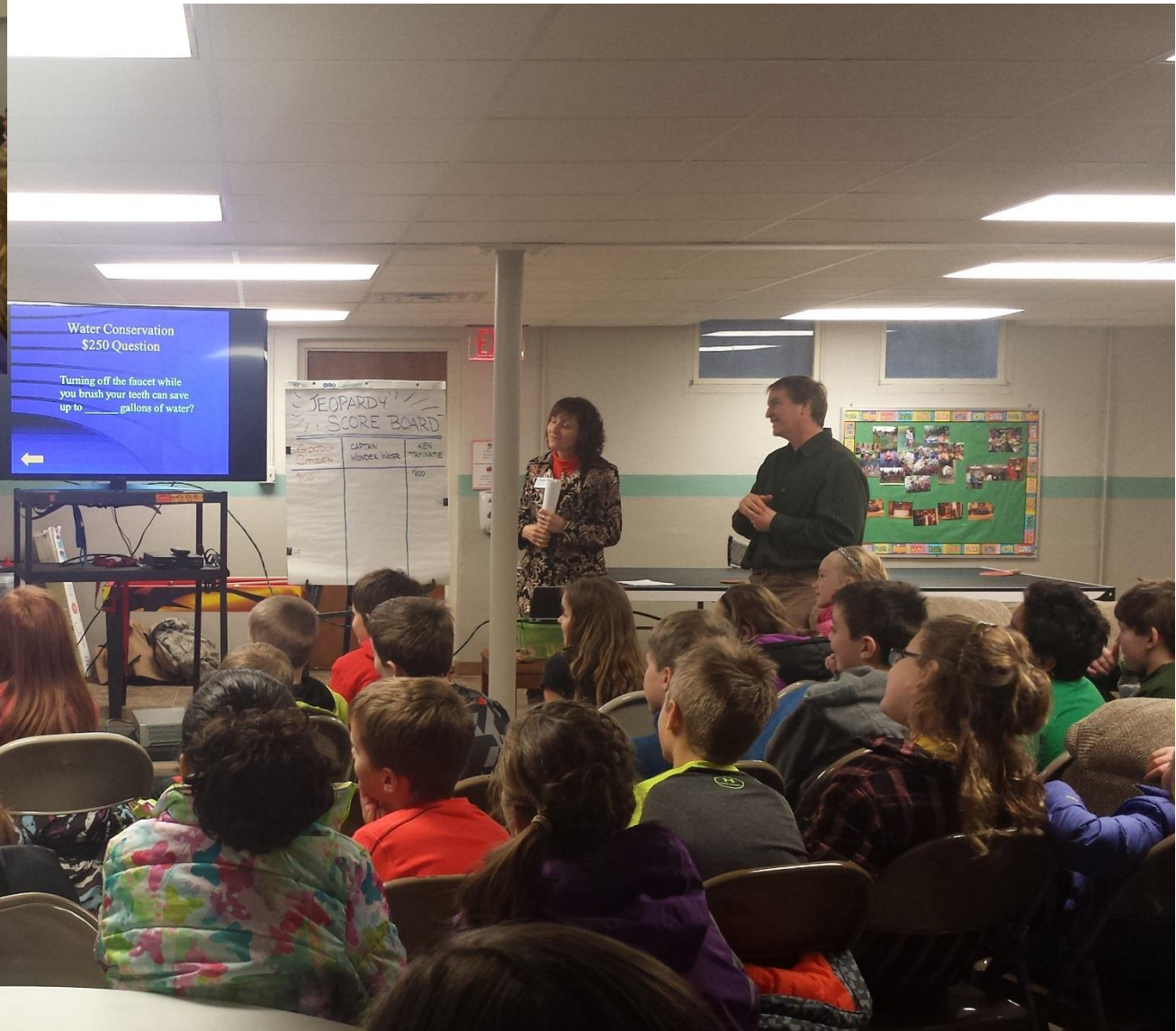




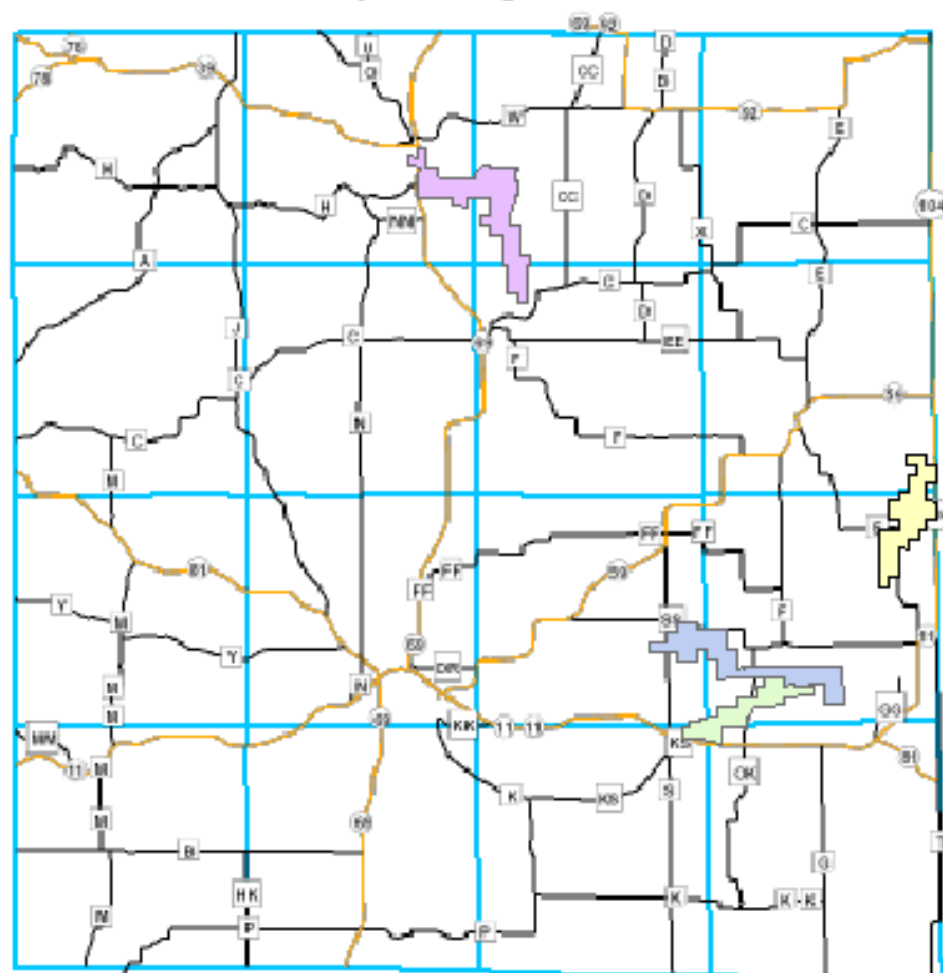


Annual Tree Sale

Groundwater Presentations



Green County Drainage Districts

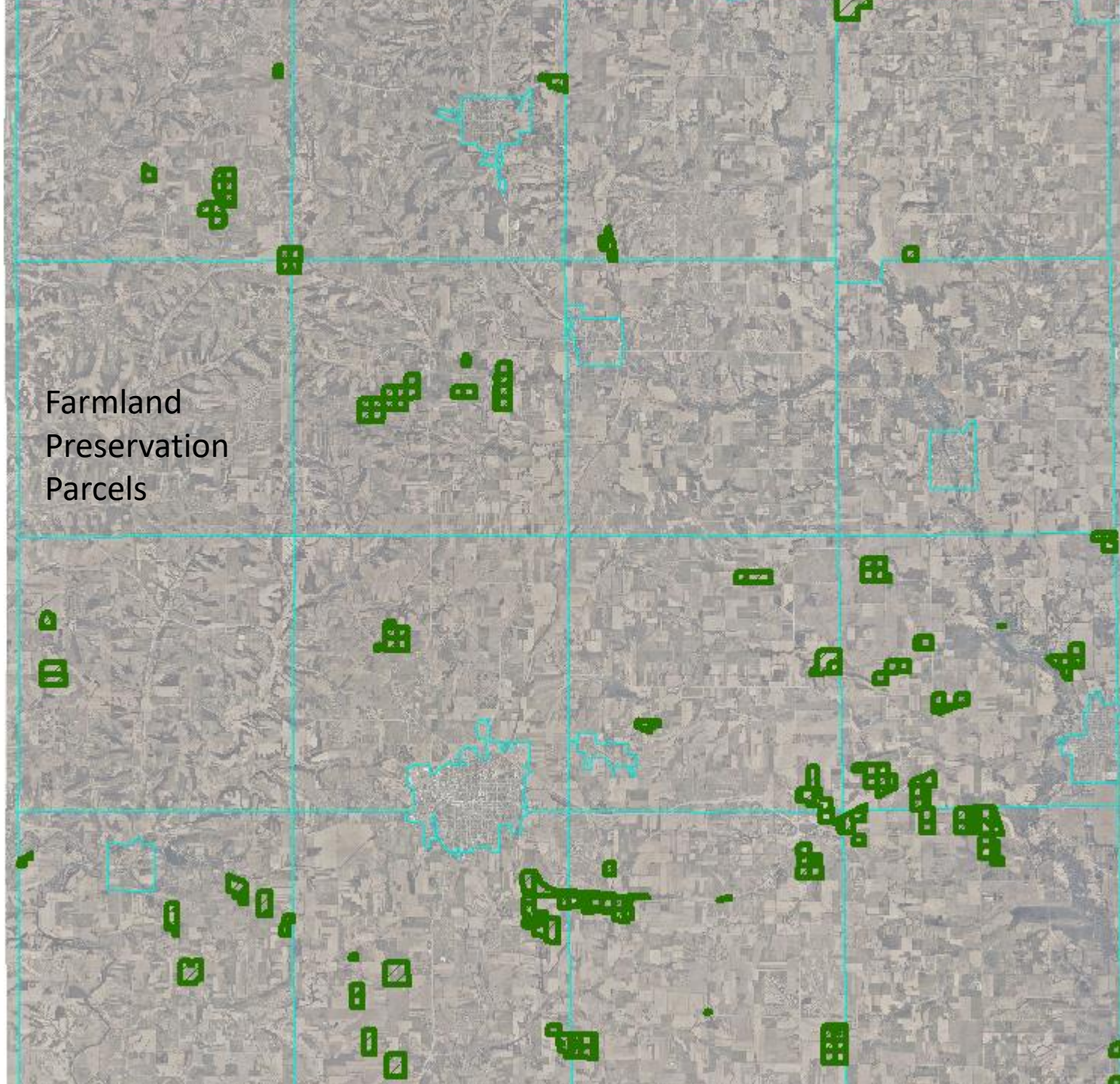


- Broughton District
- Decatur District
- District # 1
- District # 2

10 5 0 10 Miles



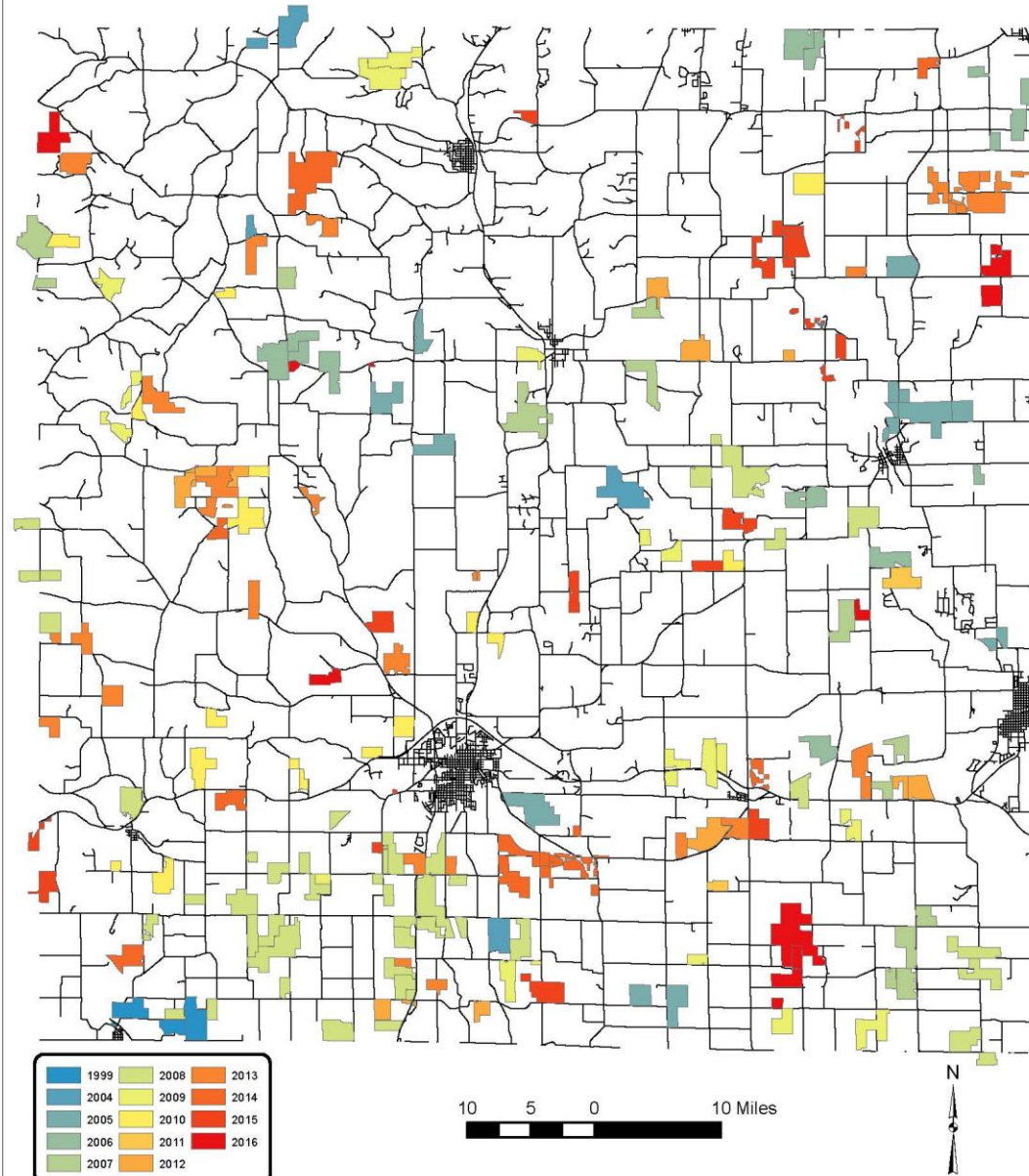
Farmland
Preservation
Parcels

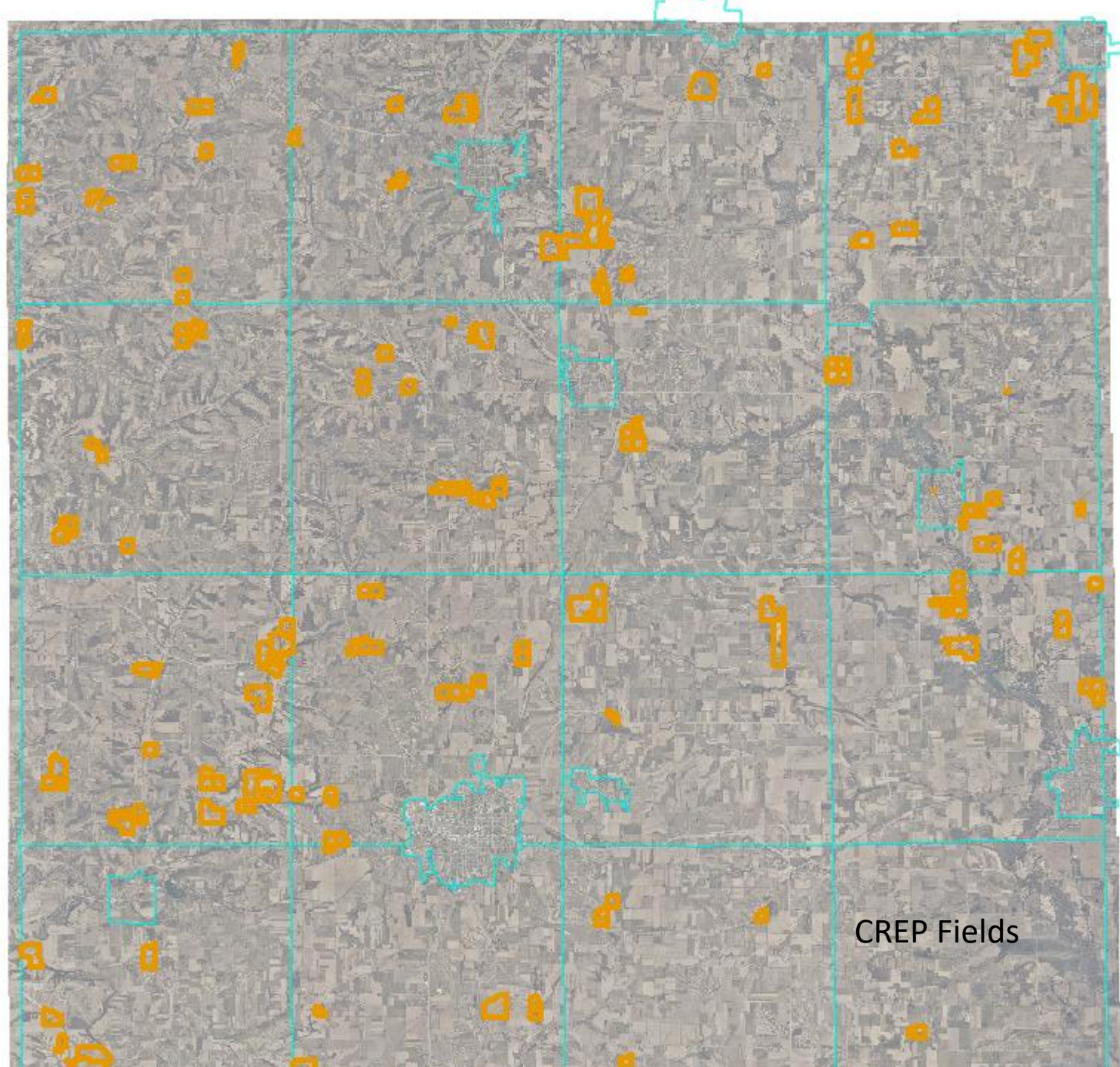


Nutrient Management Farmer Education



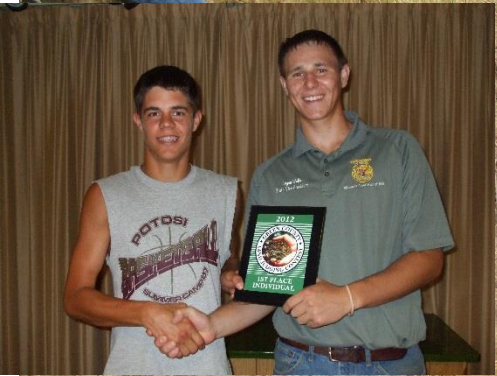
NMPs that have been Cost Shared in Green County



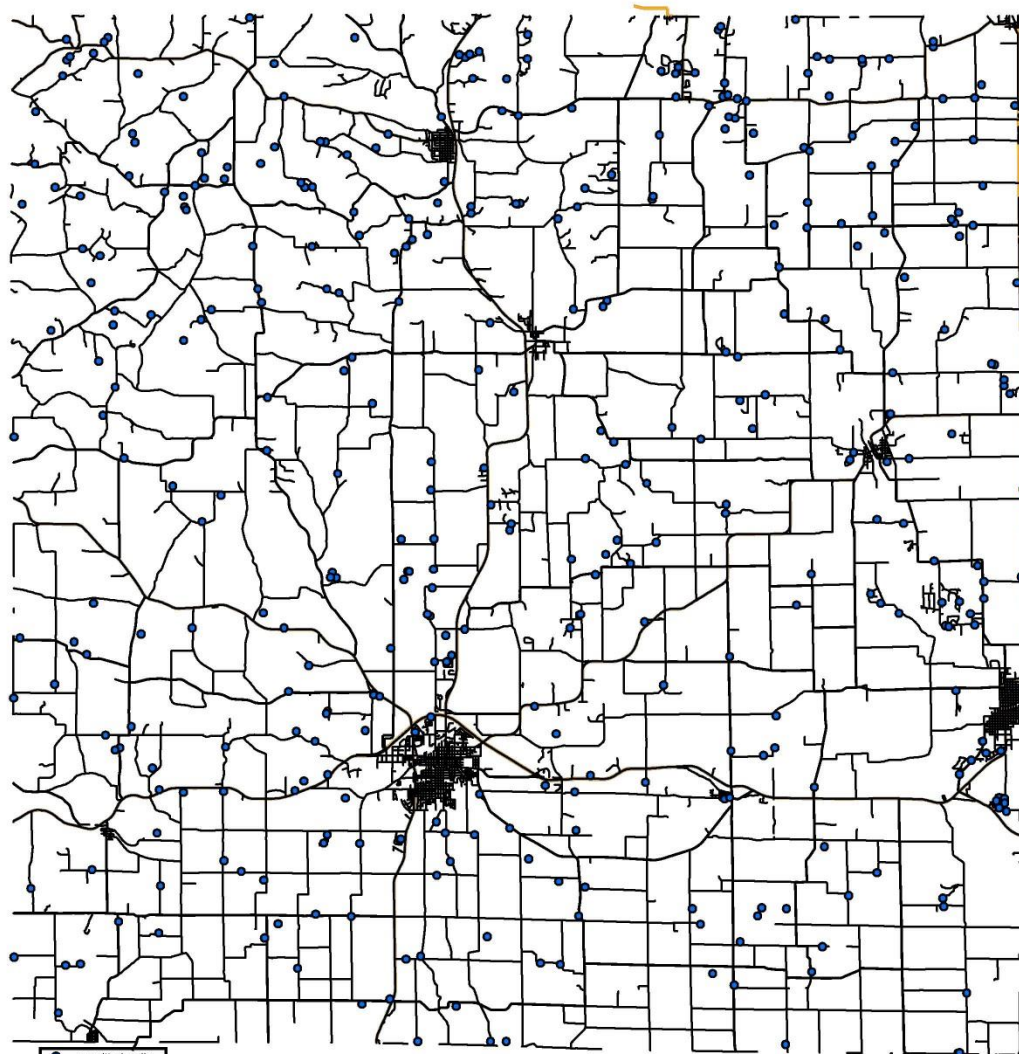


CREP Fields

Land Judging Contests



Green County New Wells Permitted Since 2008

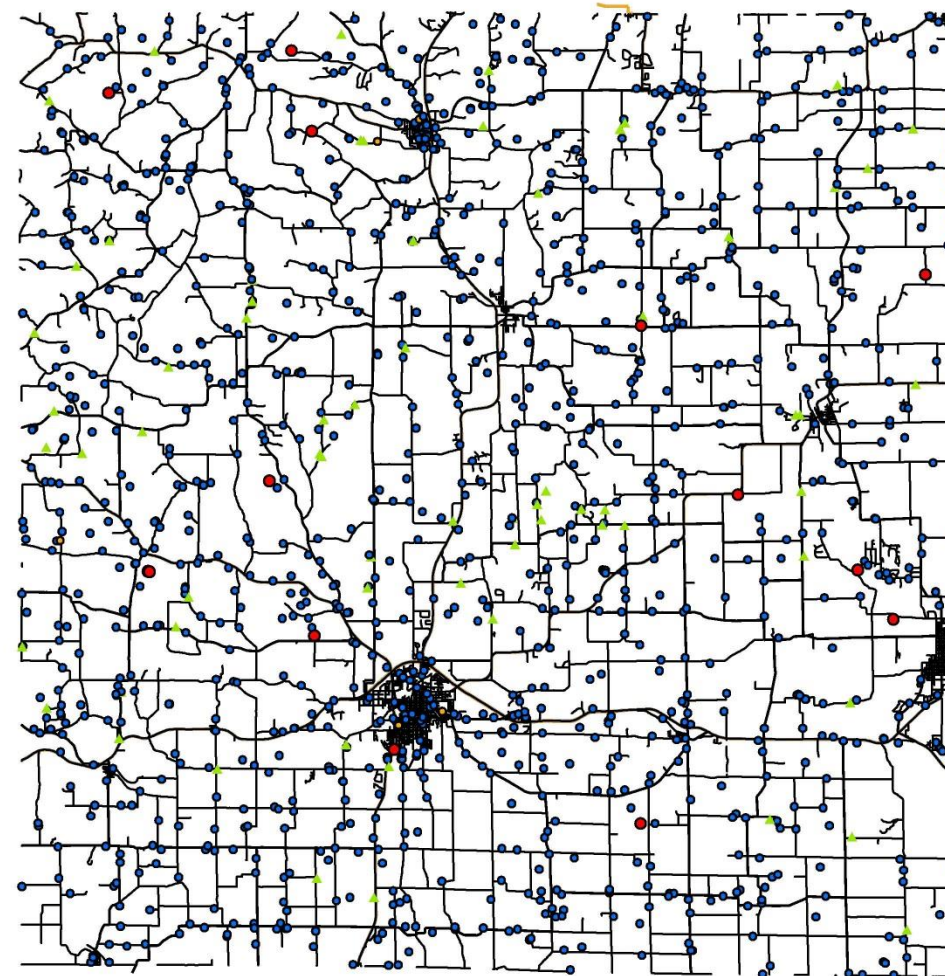


0 0.75 1.5 3 4.5 6 Miles



July 15, 2016 Green County Land and Water Conservation Dept.

Green County Well Abandonment Inventory



10 5 0 10 Miles



7/15/2016 Green County Land & Water Conservation Dept.



Conservation Practices: before and after



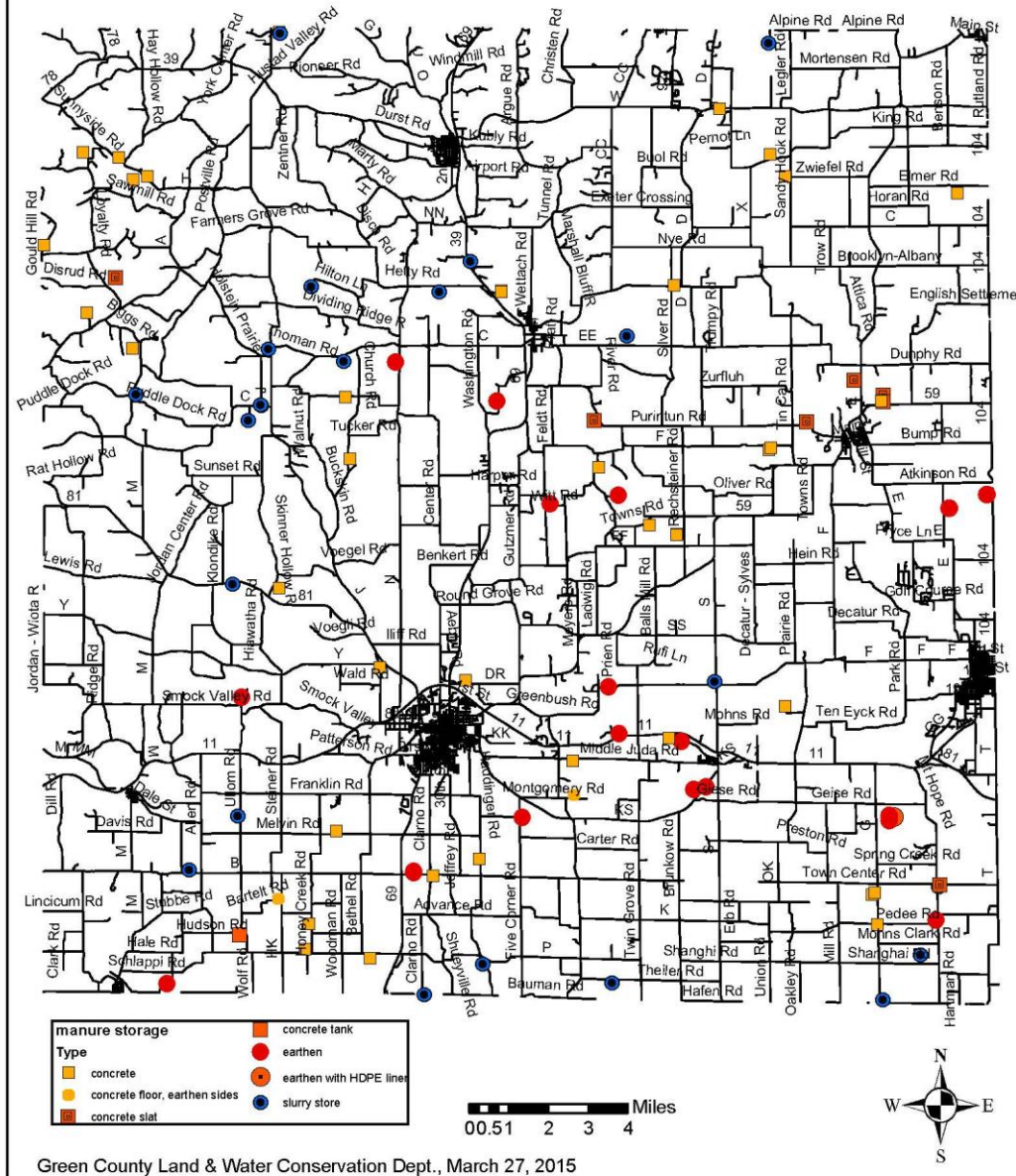






Green County Manure Storage Structures

With 30 days storage or more



Questions?