

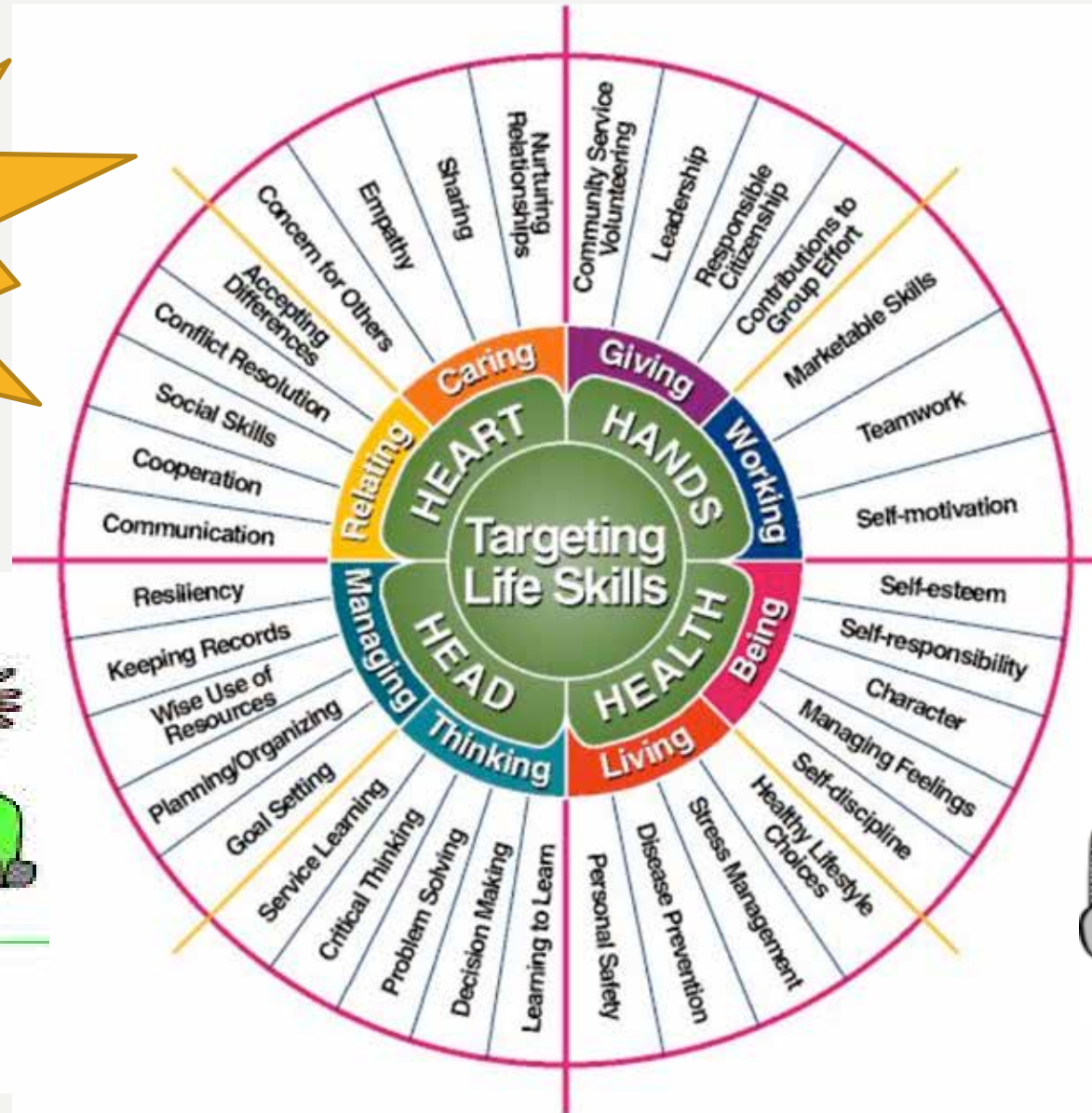


PREPARING FOR SUCCESS!

ENTERING AT THE
2018 GREEN COUNTY FAIR

IT'S NOT ABOUT THE RIBBONS & \$

LIFE SKILLS



BEFORE GOING ONLINE TO ENTER

- **READ! READ! READ!**
 - Junior Fair General Rules & Instructions
 - Online Entry Guidelines
 - Individual Department Rules & Entry Options
 - Animal Exhibitors
 - 2018 Animal Health Regulations
 - 4-H FFA Livestock Auction Rules
 - Dairy Youth Recognition Auction Rules
- **Go to:** <http://greencountyfair.net>

Why can't I just read the entry options when I'm in the Online Fair Entry program?

Fairbook Example:

Department 20 – Photography
Class B – Grades 6-7
Lot 18 – 3 prints or 1- 5"x7"
enlargement, promoting tourism in
Green County – either by showing
people enjoying festivals, events or
recreation in the county OR by
showcasing outstanding scenery in
the county.

Online Description Example:

Dept. 20, Class B, Lot 18 – Green
County Tourism

READ! READ! READ!



HOME ABOUT FAIR CAMPING STORAGE RENTALS SPONSORS GALLERY CONTACT

JUNIOR CLASS FAIRBOOK

2018 Green County Junior Fair Trophies and Awards-tbd

2018 Animal Health Regulations

4H FFA Livestock Auction
Dairy Youth Recognition Auction

Junior Fair General Rules and Instructions

Dept. 1 Dairy- REVISED

Dept. 2 Beef

Dept. 3 Swine

Ask LOTS & LOTS
of Question!!

-Ask question if you don't
know what something means
OR don't know where to go.
-Ask Club & Project Leaders,
UW-Extension Staff OR
Superintendents.

SELECTING FAIR ENTRIES

Parents might...offer suggestions or bring up factors to consider, BUT the **YOUTH** should be selecting County Fair entries!

- Youth should consider...
 - What best demonstrates the *NEW* things I learned in 4-H this year?
 - How many entries are “do-able” for me to complete by fair?



Keep in mind...

- *A beautifully tied blanket by an exhibitor just learning how to make a tied blanket shows EXCELLENT learning.*
- *A beautifully tied blanket by an exhibitor who has entered a tied blanket each year shows GOOD or OK learning.*
- *A beautifully tied blanket by an exhibitor's parent shows POOR learning.*

And sometimes
our greatest
learning comes
from failures.

4-H PROJECTS VS. FAIR DEPARTMENTS

4-H youth can exhibit in Jr Fair Departments related to their 4-H Projects.

- Find your 4-H Projects using the “4-H Projects vs. Fair Departments Chart” *(to be posted soon at fair website)*
- Example differences:

- 4-H Project: Arts & Crafts
- 4-H Project: Archery
- 4-H Project: Pets

Junior Fair: Dept. 18 Cultural Arts

Junior Fair: Dept. 16 Natural Sciences, Class F & G

Junior Fair: Dept. 10 Vet Science

Project



Home Environment

Department



Home Furnishings

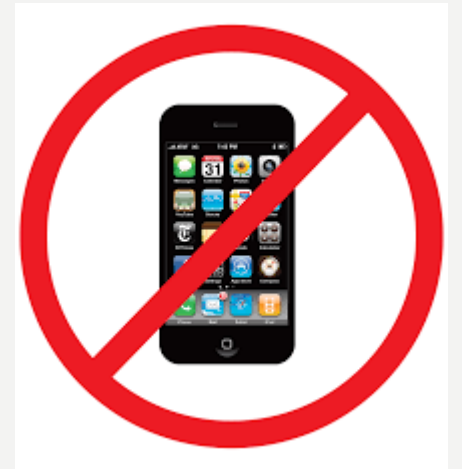
Exhibit



Quilt

COMPLETING THE ONLINE ENTRY FORM

- Use a Computer! (NOT a cell phone!!)
- Parents & Youth should complete the forms TOGETHER!!!!
- When you "Create Account" ...
 - Keep track of your username & password
 - Expect a confirmation email that you created an account
- Grade – Enter your school grade as of January 2018
- Remember to refer to the Fairbook for...
 - Full Class & Lot Description (incorrect lots = penalties at fair)
 - Entry limits per Department or Class or Lot
- Click on "Review Entries"!!!!
- Don't forget to hit "**Submit**" by **Tue. May 29th @ 4:30pm**
 - Once you hit "Submit" your entries are final!
- Expect & KEEP confirmation of submitted entries



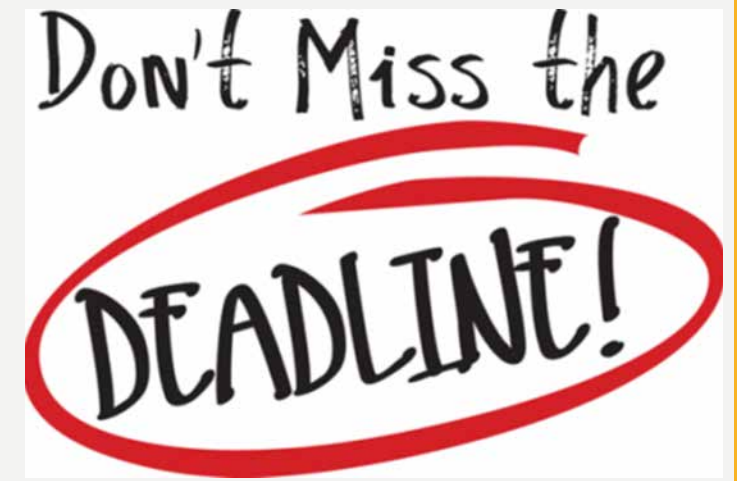
SHOWING ANIMALS? (DEPT. 1-8)



- **All animal project (including small animals) must be in possession by May 1st.**
- **Premise ID** – If you are showing Dairy, Beef, Swine, Sheep, Goats, Horses, or Poultry, you **MUST** enter the Premise ID where the animals are housed.
- **Showmanship** – If you plan to participate in showmanship, you **MUST ENTER** the SHOWMANSHIP class on your online entries.
- **Animal ID** – Check which species need Ear tag, Registration #, RFID #, Name, Birthdate listed in the “Registry” or “Birthdate” boxes.
- **Head Counts** – Confirm # with Lead Superintendents by Fri. July 6th @ Noon
- **Animal Weigh-in / Check-in** - Check dates & times
- **Health Requirements** – Check your departments’ specific health requirements.
- **Livestock Auction** - <https://green.uwex.edu/4-h-youth-development/livestock-auctions/>
 - Auction Entry Form (Due to UW-Extension Office by 4:30pm, Tue. May 29th)
 - Auction Buyer Card (2-Buyer Signed Cards Per Exhibitor-Due to UWEX Office by 4:30pm, Fri. June 29th)
 - Auction Financial Record (Due to UW-Extension Office by 4:30pm Oct. 1st)

IMPORTANT TIMELINES

- Mon. Apr. 30 – Adult Leader Accountability Form
- ~May 1 – Online Fair Entry program goes live!
- Tue. May 29th @ 4:30 – DEADLINE for Green County Junior Fair Entries
- Tue. July 17th, Noon-6:30pm – Family Packet Pick-up
 - Exhibitor Wristbands
 - Entry Tags
 - Back Tags
 - Adult Leader Passes
- Sun. July 22nd @ 6:00pm Exhibit Release & Clean-up



**Accept responsibility
for your actions.**

**Be accountable for your
results.**

**Take ownership of your
mistakes.**

MOST IMPORTANTLY...

**READ!
READ!
READ!**

**Demonstrate
Good
Character &
Ethics**

**Learn
NEW
Things!**