



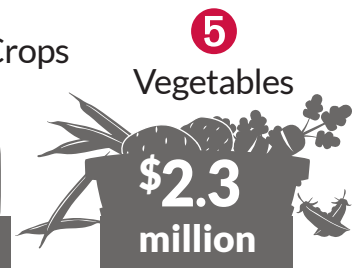
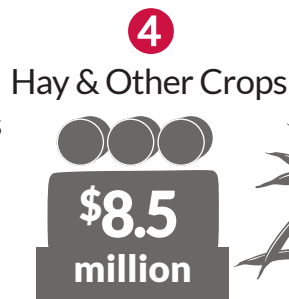
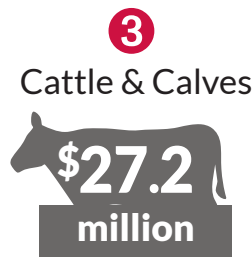
## AGRICULTURE WORKS HARD FOR

### ▶ GREEN COUNTY

Family-owned farms, food processors and agriculture-related businesses generate thousands of jobs and millions of dollars of economic activity for Green County, while contributing to local income and tax revenues.

#### Agriculture's annual impact:

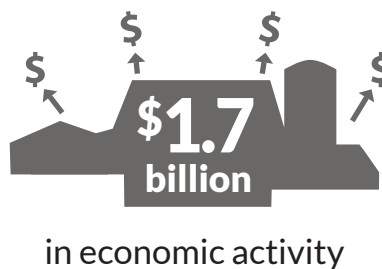
#### WHAT DO OUR FARMS PRODUCE?



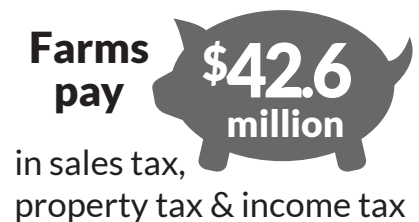
#### HOW MANY PEOPLE DOES AGRICULTURE EMPLOY?



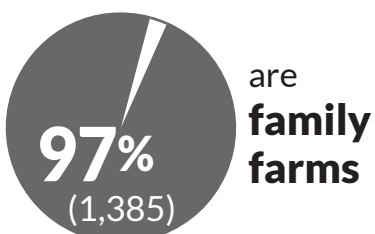
#### WHAT IS THE ECONOMIC IMPACT?



#### HOW MUCH TAX DOES AGRICULTURE CONTRIBUTE?



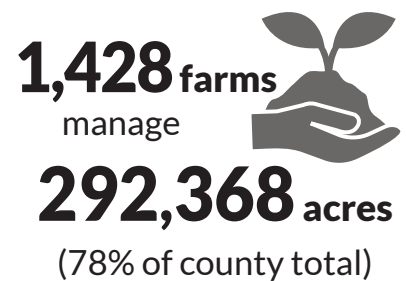
#### WHO OWNS THE FARMS?



#### HOW MUCH IS SOLD LOCALLY?



#### WHO TAKES CARE OF THE LAND?



## THE AGRICULTURE SECTOR BENEFITS THE ENTIRE COUNTY

Green County has the highest number of cheese manufacturing plants and the highest concentration of Master Cheesemakers in the state. The 11 cheese plants utilize milk from approximately 200 dairy farms to produce more than 60 varieties of award winning artisan cheeses. The 1,428 farms in the county are an average size of 205 acres. Green County ranks in the top fifteen counties in the production of corn, corn silage, hay/haylage. The county is home to one of Wisconsin’s first ethanol plants, producing 85 million gallons of ethanol and over 255,000 tons of high value co-products annually.

**Did you know?**

**GREEN COUNTY IS**  
**No. 8** in Wisconsin’s  
**grain industry**



**Extension**  
 UNIVERSITY OF WISCONSIN-MADISON

The University of Wisconsin–Madison Division of Extension is part of the local and statewide network of organizations and agencies that support Wisconsin’s \$104.8 billion agriculture industry. Extension helps enhance the economic impact of agriculture by providing research-based information that increases farm profitability, improves food safety, reduces environmental impacts and expands agribusiness networks.

**For more information,  
 please contact:**

UW–Madison Extension Green County  
 2841 6th Street  
 Monroe, WI 53566  
  
 608-328-9440  
  
[green.extension.wisc.edu](http://green.extension.wisc.edu)

Copyright © 2019 by the Board of Regents of the University of Wisconsin System doing business as the University of Wisconsin–Madison Division of Extension. All rights reserved. An EEO/AA employer, the University of Wisconsin–Madison Division of Extension provides equal opportunities in employment and programming, including Title VI, Title IX, and ADA requirements.

Support for this work was provided by the University of Wisconsin–Madison Division of Extension, Dairy Farmers of Wisconsin and the Wisconsin Department of Agriculture, Trade and Consumer Protection (DATCP). Economic data (2017) provided by: Steven C. Deller, Professor, Department of Agriculture and Applied Economics, University of Wisconsin–Madison and Community Development Specialist, UW–Madison Division of Extension. Additional data was drawn from the USDA 2017 Census of Agriculture. Publication production was completed through a collaboration of the Division of Extension Natural Resources Institute and the Division of Extension Office of Communications and Stakeholder Engagement.

Produced in cooperation with Dairy Farmers of Wisconsin, Wisconsin Department of Agriculture, Trade and Consumer Protection and Wisconsin Farm Bureau.

